

TTX[®]

CTXMS251267/ CTXMS251268 CONTROL ARM PATENTED SOLUTIONS



2019 and newer (5th Generation) RAM 1500



CTXMS251267

Hardware included
for complete install

Mevotech TTX CTXMS251267 and CTXMS251268 are the patented and engineered aftermarket solution for extended service life front upper control arms on the 2019 and newer 5th generation RAM 1500.

- Patented greaseable sintered Dynamic Control Bearing™ provides superior performance and improved durability under all conditions (*US Patent n° 9296271*)
- Patented Locking Dust Boot seals out road contaminants (*US Patent n° 9771971*) and solid forged steel construction replaces OEM hollow stamped steel and plastic composite design, increasing assembly strength
- Ultimate engineering – TTX delivers the most innovative and long-lasting parts

MEVOTECH



**ULTIMATE
ENGINEERING**

**CTXMS251267/CTXMS251268
CONTROL ARM**

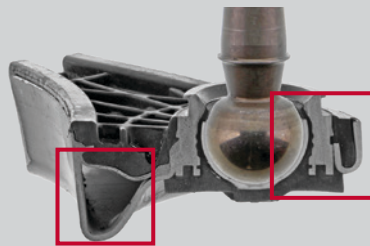
- The OE control arm assembly is designed using a two-step composite process. This involves bonding a type of plastic to a thin layer of stamped steel across the entire control arm body.
- Similarly, the ball joint housing consists of an outer steel shell which is then filled by a type of plastic. In this design, the ball joint bearing can be described as a plastic “liner”.
- This design approach may reduce part cost and weight. However, it is also characterized by a significant amount of voided and hollow areas along key areas of the control arm body
- Additionally as the “liner” wears, the ball sphere will begin to erode the plastic filling of the housing, further reducing overall part service life.

Originally Equipped Control Arm



COMPOSITE DESIGN

Type of plastic is molded to a thin layer of stamped steel. Key areas are hollow.



BALL JOINT

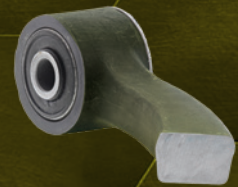
Ball sphere is encased by plastic liner and fused to plastic composite material. Crucial support areas are hollow.

Mevotech's Patented Solution



PATENTED LOCKING DUST BOOT

Seals out road contaminants and protects internals. Multi-lipped boot is locked to housing for improved durability.



SOLID FORGED CONSTRUCTION

Fully forged one-piece control arm body.



PATENTED DYNAMIC CONTROL BEARING™

Optimizes longer service life by managing preload. Sintered bearings retain performance under high heat and high load conditions.



CONTROL ARMS ALSO FEATURE:

- Patented greaseable sintered bearings
- Patented Locking Dust Boots
- Repel-TEK™ anti-corrosion coating
- Enhanced forged construction
- EASY-SNAP™ cotter pins and fastening hardware
- Upgraded bushings



Part Number	Position	Application
CTXMS251267	Front Left Upper	2022-2019 RAM 1500
CTXMS251268	Front Right Upper	

Mevotech LP | ©2023 No reproduction in whole or in part without prior written approval.



ENGINEERED FOR TECHNICIANS

Customer Care: 1.866.883.7075 | Tech Hotline: 1.844.572.1304

MEVOTECH.COM